

“Energize Your Life”

 **MegaLento**<sup>®</sup>

 **MEGA**  
Insulation Solutions

[megainsulation.com.tr](http://megainsulation.com.tr)

## About Us

Mega Insulation Solutions, which is the innovative brand of Turkish insulation sector, produces in a total area of 158,000 m<sup>2</sup>, of which 55,000 m<sup>2</sup> is closed and 103.000 m<sup>2</sup> is open area. As a respected, reliable and strong brand, Mega has reached 40,000 tons/year Stone Wool, 200,000 m<sup>3</sup>/year XPS, 350,000 m<sup>3</sup>/year EPS production capacities. Mega is one of the leading players in its sector in terms of its rich product range and production capacity.

As a respected, reliable and strong brand, Mega has reached 40,000 tons/year stone wool, 200,000 m<sup>3</sup>/year XPS, 350,000 m<sup>3</sup>/year EPS production capacities. Mega is one of the leading players in its sector in terms of its rich product range and production capacity. Mega, which is one of the two companies producing Stone Wool, XPS and EPS together in our country, exports to 25 countries.



### Mega Insulation Solutions - Stone Wool Production Facility

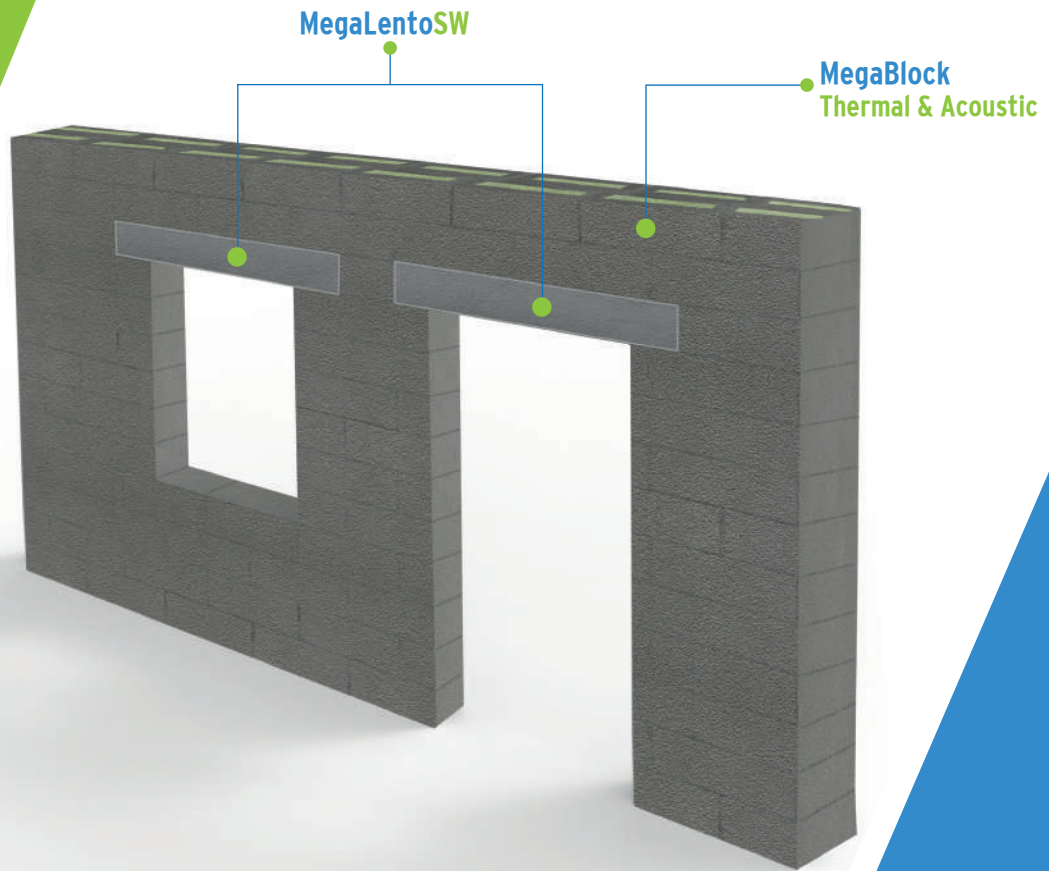
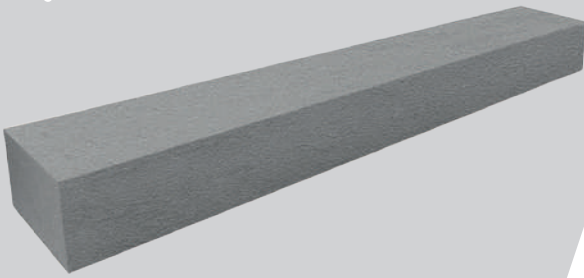
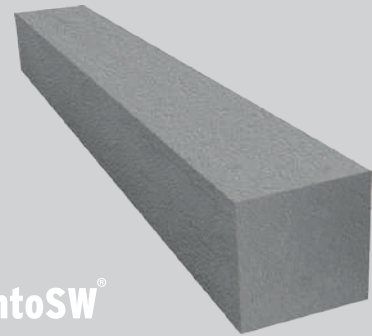
Closed Area 40.000 m<sup>2</sup> / Open Area 116.000 m<sup>2</sup> / Production Capacity 40.000 tons/year



### Mega Insulation Solutions - XPS ve EPS Production Facility

Closed Area 15.000 m<sup>2</sup> / Open Area 42.000 m<sup>2</sup>

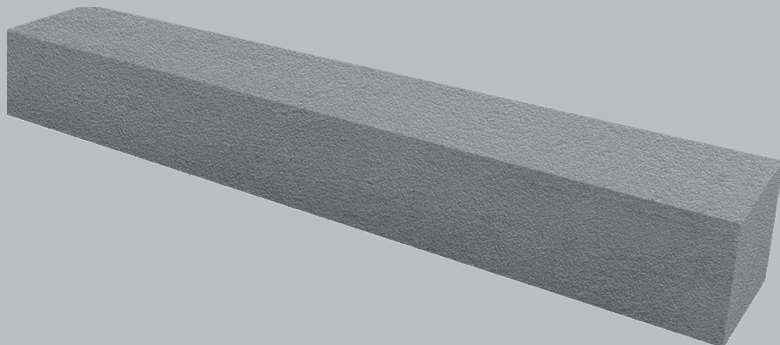
Production Capacity 200.000 m<sup>3</sup>/year - XPS / Production Capacity 300.000 m<sup>3</sup>/year - EPS

 **MegaLentoSW<sup>®</sup>** **MegaLentoSW<sup>®</sup>**

MegaLento SW is a horizontal, complementary building element used to close the openings on the doors and windows of both the interior and exterior walls of buildings. It has a composite structure that serves as a load-bearing element, contributing to earthquake safety with its lightweight and ergonomic design. Additionally, it provides thermal, acoustic, and fire insulation properties. Due to its lightweight and ergonomic structure, MegaLento SW enables easy installation and practical application. MegaLento SW offers the advantage of time savings. It can be used in harmony with all wall and building elements (MegaBlock, brick, gas concrete, lightweight concrete, etc.).

It can be produced in various sizes and thicknesses according to the static calculations and dimensions of the wall elements to be used in your structures.





## TECHNICAL SPECIFICATIONS

TECHNICAL SPECIFICATIONS	MEGA LENTO SW100	MEGA LENTO SW150	MEGA LENTO SW200
WIDENESS	100 mm	150 mm	200 mm
HEIGHT	150 mm	185 mm	185 mm
LENGTH	600 - 200 mm	600 - 3000 mm	600 - 3000 mm
BEARING CAPACITY	2 kN/m		
DEFLECTION	≤ 1/200		
REACTION TO FIRE	A1		
DRY UNIT DENSITY	< 350 kg/m <sup>3</sup>		

## AREAS OF USAGE

- It is used for closing the door and window openings on the interior and exterior walls of your buildings.
- It can be used in Fire and Emergency Exit doors.

## How is MegaLento SW applied?

- Mega Lento is easy to assemble and practical to apply.
- MegaLento SW is produced in ready-to-use form in the required measurements for the openings on the doors and windows in your buildings.
- MegaLento SW should be installed on walls that are constructed at an equal height.
- MegaLentos should be installed with a seating allowance that is proportional to the opening measurement, with equal overlapping on both sides.

• **Thermal Insulation Property**

• **Fire Resistance**

• **Lightweight**

• **Ergonomic**

• **Environmentally Friendly**

• **Practical Application**





# CERTIFICATE



**Uluslararası  
Belgelendirme**

**CE UYGUNLUK BEYANI  
CE DECLARATION OF CONFORMITY**



**MEGA YALITIM ÜRETİM PAZARLAMA  
DIŞ TİCARET ANONİM ŞİRKETİ**

**SANAYİOSB MAH. EOSB 2 SK. NO: 15 İÇ KAPI  
NO: 2 YAZIKONAK KÖYÜ/ MERKEZ/ ELAZIĞ**



That the following described product in our delivered version complies with appropriate basic safety and health requirements of **BUILDING MATERIALS REGULATION (305/2011/ EU)** on its design and type, as brought into circulation by us. In Case of alteration of the product, not agreed upon by us, this declaration will lose its validity.

Teslim edilen versiyonumuzda aşağıda tanımlanan ürünün **YAPI MALZEMELERİ YÖNETMELİĞİ (305/2011/AB)** tasarım ve tipine göre tarafımızca dolaşıma sokulan uygun temel güvenlik ve sağlık şartlarına uygun olduğunu beyan ederiz. Ürünün değiştirilmesi durumunda, tarafımızdan üzerinde anlaşmaya varılmayan bu beyan geçerliliğini kaybedecektir.

**Description Of The Product/Product Part**

**: MegaLento SW**

**Ürünün / Ürün Parça Tamamı**

**Teknik Özellikleri**

**Uzunluk : 100 - 3000 mm ± 5 mm**

**Genişlik : 100 - 300 mm ± 5 mm**

**Yükseklik : 130 - 300 mm ± 5 mm**

**Taşıyıcılık Kapasitesi : 2,00kN/m**

**Sehim : ≤ 1/200**

**Yangına Tepki : A1**

**Kuru Birim Yoğunluk : < 350kg/m<sup>3</sup>**

**Applicable EC Directives**

**: 305/2011/EU**

**Uygulanabilir Direktifler**

**Applicable Harmonised Standards**

**: TSE EN 845-2 +A1, TS EN 846-9,  
TS EN 846-11**

**Uygulanabilir Standartlar**

**Certificate Code**

**: MEGA YALITIM**

**Sertifika Kodu**

**Certificate Number**

**: A153990**

**Sertifika Numarası**

**Certificate Issue Date**

**: 09.08.2023**

**Sertifika Hazırlanma Tarihi**

**Certificate Validity Date**

**: 09.08.2024**

**Sertifika Geçerlilik Tarihi**

**EU Representative/AB Temsilcisi**

**(Authorized Signature and Title)**

**(Yetkili İmza ve Ünvanı )**

Teknik özellikler Belcert tarafından onaylanmıştır.  
Ürünler için teknik özellikler ve diğer teknik özellikler hakkında sorular için belge 1 ad parçası.  
EÜ, Belcert tarafından onaylanmıştır. Ürünler için teknik özellikler hakkında sorular için belge 1 ad parçası.  
Belcert tarafından onaylanmıştır. Ürünler için teknik özellikler hakkında sorular için belge 1 ad parçası.



**00396**

**BELCERT ULUSLARARASI BELGELENDİRME ŞİRKETİ**

Hürriyet Bulvarı, No:45, Türkseven Apt. K:1-D:7, Yakuplu, Beylikdüzü / İstanbul  
Telefon: 0212 438 04 76 - E-mail: info@belcert.com

Belgenin geçerlilik durumu <https://www.belcert.com> adresinden kontrol edilebilir.





StoneWool<sup>®</sup>  
Stone Wool Insulation Systems






XPS<sup>®</sup>  
Extruded Polystyrene



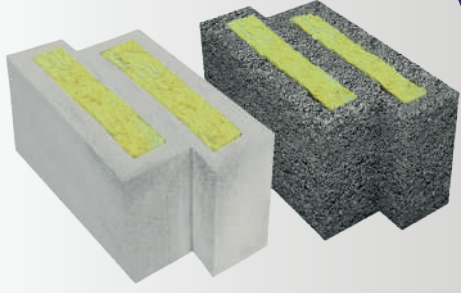




EPS<sup>®</sup>  
Expanded Polystyrene

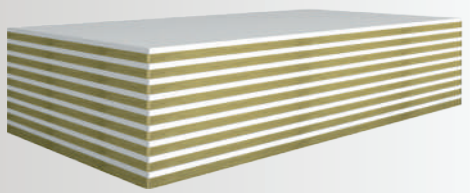





Block<sup>®</sup>  
Insulated Construction Elements

DesiWool<sup>®</sup>


Tech<sup>®</sup>  
Construction Chemicals





**“Energize Your Life”**

“Energize Your Life”



Sur Yapı Exen İstanbul Tantavi Mh. Estergon Cd.  
F Blok No: 24F Kat: 37 D: 431 - 34764  
Ümraniye / İstanbul  
T: (0216) 784 34 69

EOSB 2.Sokak No: 15/2 Yazıkonak / Elazığ  
T: (0424) 255 1 444 / F: (0424) 255 1 472

[megainsulation.com.tr](http://megainsulation.com.tr)



**MEGA**  
Insulation Solutions